

# Lawrence Technological University®

## Be curious. Make magic.

ARCHITECTURE + DESIGN   ARTS + SCIENCES   BUSINESS + INFORMATION TECHNOLOGY   ENGINEERING   HEALTH SCIENCES



Lawrence Technological University is one of only 13 private, technological, and comprehensive doctoral universities in the United States. Founded in 1932, LTU is an innovative and creative university of the future, preparing leaders for the new technical era.

Students and alumni have gone on to design and engineer the tools, buildings, and products that changed the world for the better.

You can, too. Are you LTU?

*If you're a thinker, a builder...  
if you're curious...  
then you are LTU.*

**LTU** 5th in the nation for boosting  
graduates' earning potential  
– *Brookings Institution*





# Inspiring Innovation

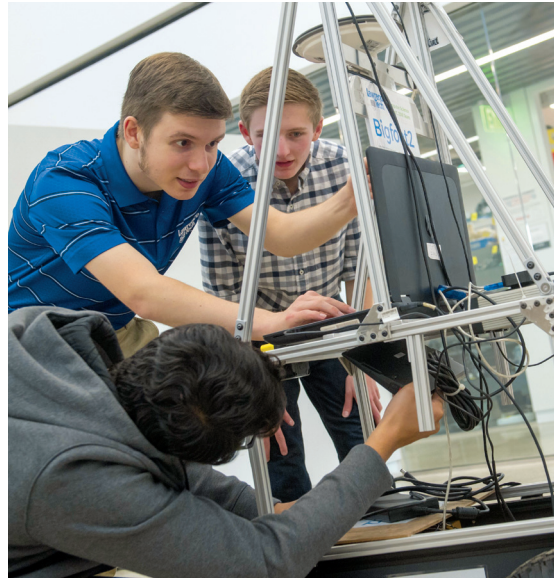
*Relevant technology-infused academic programs.*

*Applied research.*

*Close industry partnerships.*

LTU will help you transform your curiosity into magic by taking your passion for technology and design and creating inspiring innovation.

Lawrence Tech is about **Theory and Practice** – taking abstract ideas into the real world to solve tomorrow's problems.



Dive into your major from day one. You don't have to wait to study what you love.



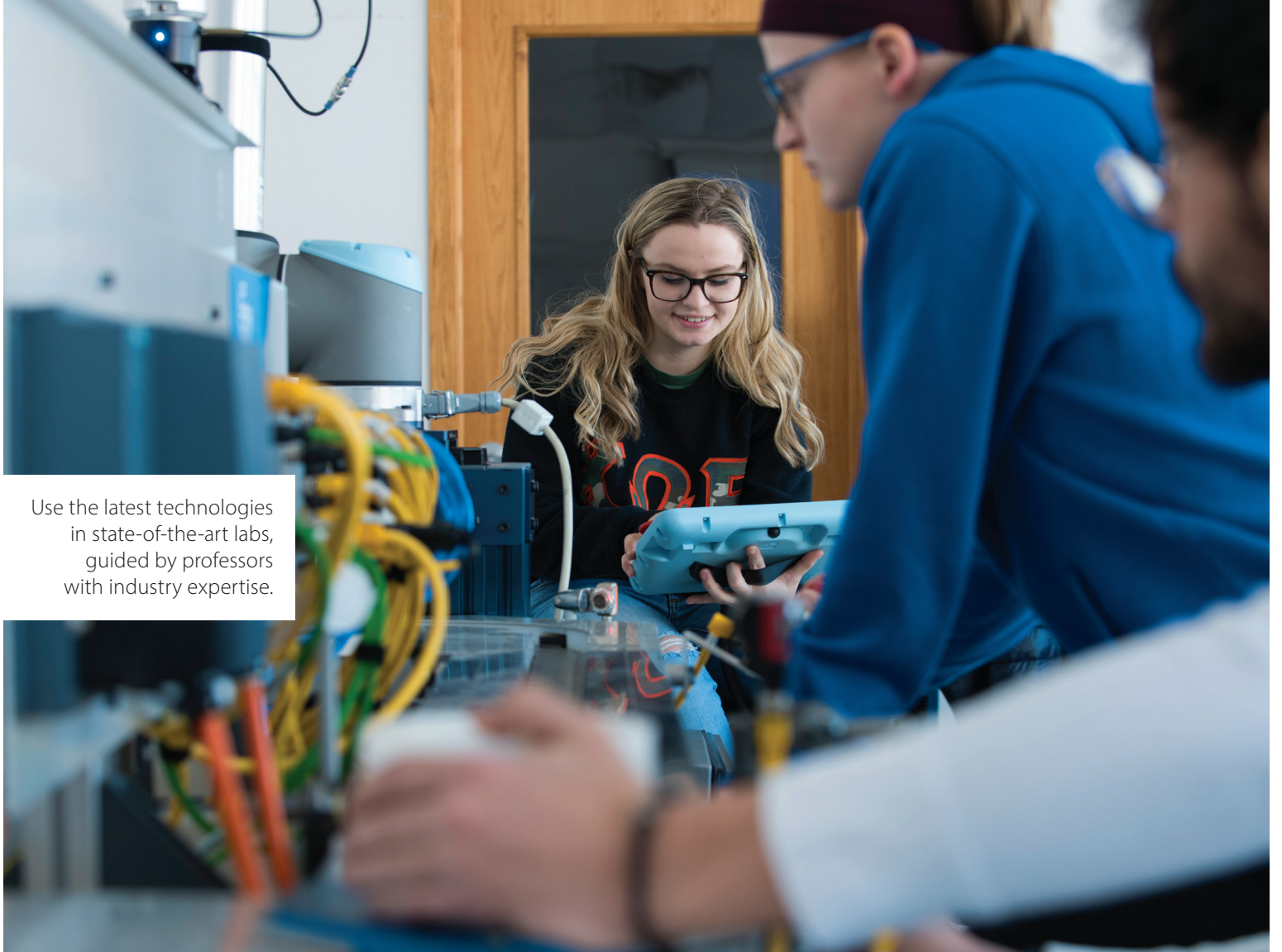
11:1 Student/faculty ratio. Never get lost in huge lectures.

Study with faculty who care.



Network with professionals in your field.





Use the latest technologies  
in state-of-the-art labs,  
guided by professors  
with industry expertise.



# Realizing Your Potential

*You are talented, smart, and  
want to make a difference.*

*LTU has the tools to let your  
curiosity lead.*

*Together, we can make  
a difference. This is your  
moment.*

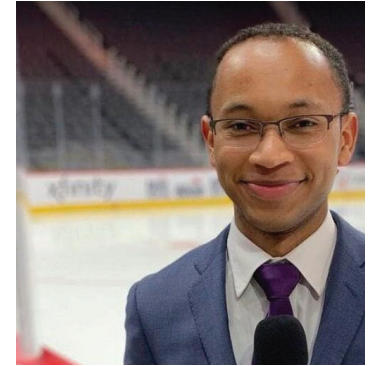
**95%** ★★★★★

Students employed or registered for  
grad school

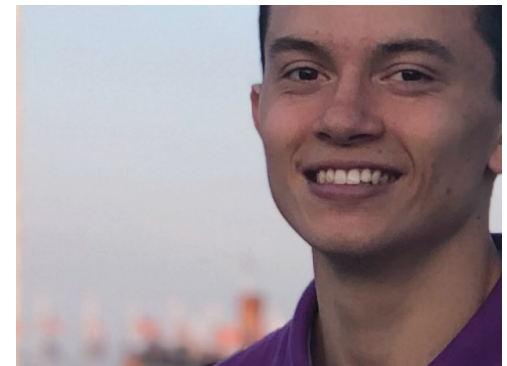
Lawrence Tech's **Blue Devil Motorsports** hosts an annual Grand Prix of time trials for student-designed Formula-style race cars. Students conceive, design, fabricate, and compete in half-scale open-wheel race cars. This is experiential learning in an exciting setting where students work together as a dedicated team. The racing competition is organized by SAE® International.

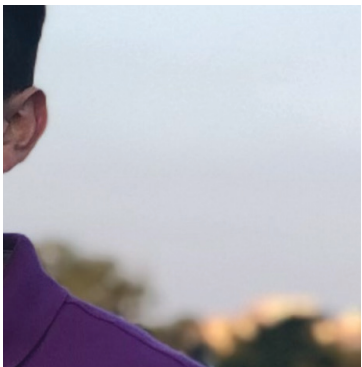
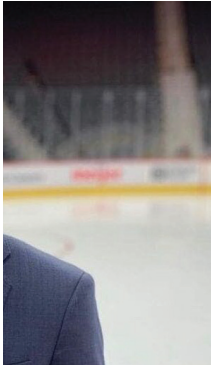


**Jason Ross, Jr.**, a senior in the Media Communication program, made history in 2022 as the first Black play-by-play broadcaster for the Chicago Blackhawks hockey team. LTU's theory and practice education allowed Jason to build his industry experience while working toward his degree. "Lawrence Tech's well-rounded media communication program helped me carve out a versatile skill set, which has been critical to success in my sports broadcasting career." Jason broadcasts for the Chicago Blackhawks on NBC Sports Chicago. Jason also broadcasts for the Detroit Lions pre-season football games.



**Juan Jaramillo, BSBME'22**, is a new product introduction biomedical engineer at Canadian Hospital Specialties Ltd., a medical device manufacturer and distributor that is continuously expanding internationally. "LTU gave me a top-notch combination of theory and practice, while also providing a personal touch with caring professors who get to know you and who invest great care and attention in their students."





**Tiffany Brown, BSAr'04, MAr'07, MBA'15**, is the executive director of the National Organization of Minority Architects, and founder of 400 FORWARD. The program supports career development of the next 400 women architects with a focus on Black girls through exposure, mentorship, and financial assistance. Tiffany was featured on the cover of *interiors + sources* magazine's September 2020 issue, and has received numerous awards and accolades.

## LTU Laptop Program

*LTU provides all undergraduates their own high-end laptop, loaded on average with over \$75,000 in industry-standard software. No reserving time at a computer lab across campus. Your lab travels with you 24/7.*

[ltu.edu/ehelp](http://ltu.edu/ehelp)

# Pursuing Excellence

*Driven?*

*Curious?*

*Want to pursue learning experiences beyond the classroom?*

LTU's dynamic culture of innovation, leadership, and entrepreneurship can help you achieve your goals.

Lawrence Tech has been named one of the  
**Best 389 colleges**  
and Best Regional Colleges by The Princeton Review!



## STUDY ABROAD

Enhance your education with international experience. Tour with your professors and participate in alternative spring breaks.

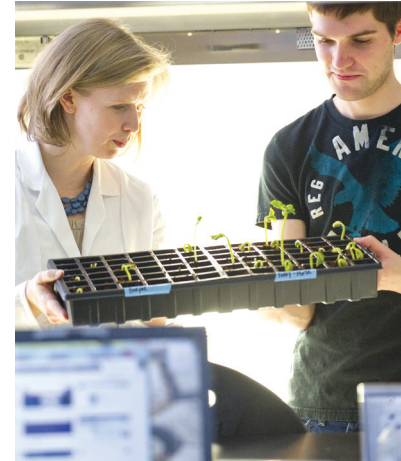
[ltu.edu/study-abroad](http://ltu.edu/study-abroad)



## QUEST

Test drive a career or explore your passion in music, medicine, art, science, or literature in this experiential learning initiative. You'll graduate with a Quest transcript in addition to your GPA transcript.

[ltu.edu/quest](http://ltu.edu/quest)







## HONORS PROGRAM

Meet challenges at the highest level to prepare for your career or post-graduate education.

[ltu.edu/arts-sciences/honors-program](http://ltu.edu/arts-sciences/honors-program)



Autonomous Robotics Sixth Consecutive Winner



## PROGRAM-SPECIFIC RESEARCH

LTU faculty are involved in a wide variety of research and development projects with industry-leading companies and government agencies.

Unlike other universities, LTU students are able to develop or participate in research projects as early as freshman year.



## COMMUNITY SERVICE

Participate in service-learning activities and get involved in the community.



# Small University, Big Experience

College is also about meeting people, having fun, and getting involved in campus activities. Starting with First Year Ignite weekend, you'll have lots of opportunities to make friends at LTU.

When you live on campus, you're always home. Your classes, the Café, field house, library, and athletic field are minutes away, and your friends are often a walk down the hall. At LTU, you're part of a community designed to ease your transition to college life.

Convenient and affordable, University Housing offers:

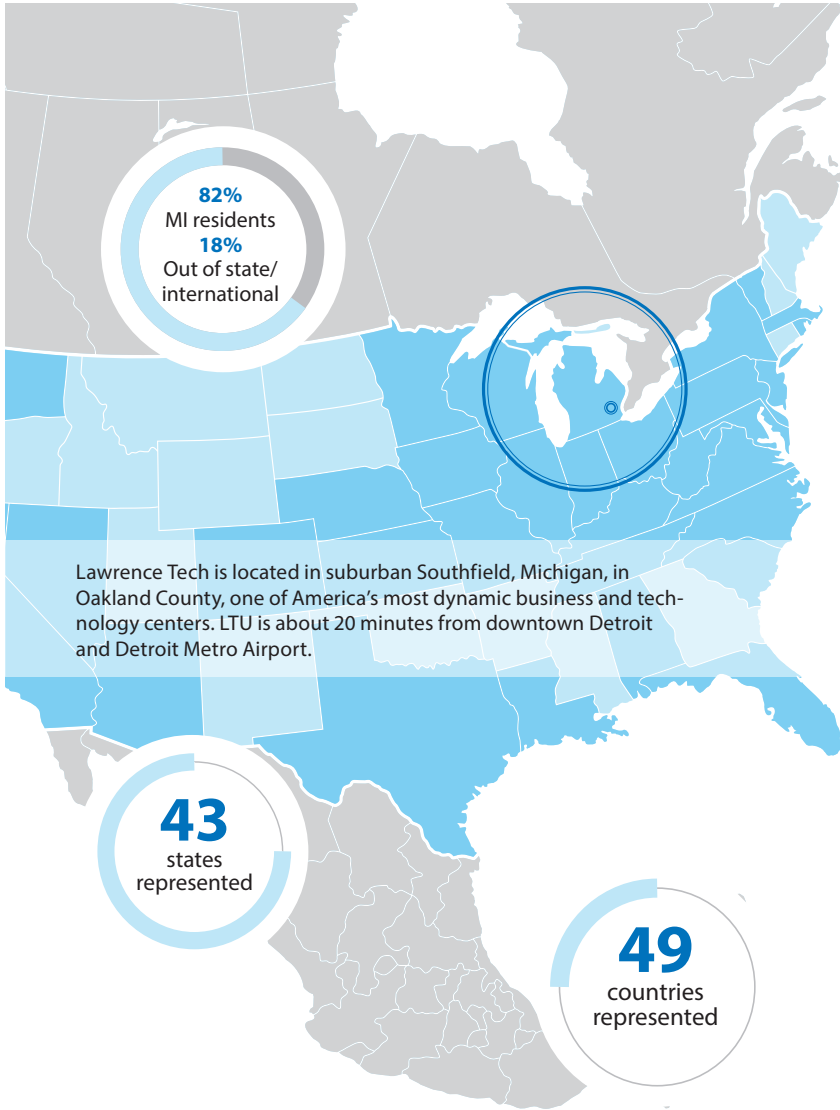
- Community living and one- and two-bedroom apartment-style suites
- All-you-care-to-eat meal plans

[ltu.edu/studentactivities](https://ltu.edu/studentactivities)

[ltu.edu/housing](https://ltu.edu/housing)



You'll never be a stranger in LTU's small college setting.



Lawrence Tech is located in suburban Southfield, Michigan, in Oakland County, one of America's most dynamic business and technology centers. LTU is about 20 minutes from downtown Detroit and Detroit Metro Airport.



77 Student organizations

11 fraternities and sororities



## COMMUNITY AND SUPPORT

Student organizations include Greek life, professional organizations, and a range of student interest organizations like the Black Students Union, Fishing Club, Out@LTU, Sexuality and Gender Alliance, Society of the Dramatic Arts, Student-Athlete Leadership Team, Student Government, and much more.

The Office of **Disability Services** and the Office of **Diversity, Equity, and Inclusion** ensure that LTU students, faculty and staff have the resources they need to go and grow.

Founded in 2011, the virtual **LGBTQ+ Resource Center** provides resources to the LTU community.

The **Maibach Interfaith Lounge** is open to all students during regular business hours for quiet reflection, personal meditation and/or prayer.

Additional resources and diversity statistics can be found at

[ltu.edu/dei](http://ltu.edu/dei)



WiFi in every room

67% Male 33% Female

Tasty food options



# LTU Spirit

*Cheer the home team  
to victory!*

LTU athletics offers sports for every skill and competition level: National Association of Intercollegiate Athletics, varsity, junior varsity, club, intramural, and esports.

LTU's Ridler Field House has Magnum strength equipment, cardio machines, a weight room, fitness track, racquetball, volleyball, and basketball courts and wrestling mats. Tech Rec classes, such as yoga, aerobics, or kickboxing, are held regularly.

[LTUathletics.com](http://LTUathletics.com)

2023 NAIA Men's Bowling National Champion  
2023 NAIA Women's Lacrosse National Champion





# Creating Your Future

Finding employment on campus, a co-op, an internship, or your first job is about being ready when opportunity knocks. LTU's Office of Career Services can prepare you to compete with the best, helping you polish your resume, conduct a job search, and talk to interviewers. As an alum, you can access their services anytime.

## **INTERNSHIPS AND CO-OPS**

Professional experience, mentoring, getting a foot in the door – one of the best ways to get a job is to intern and/or co-op. Career Services can help you make the connections.

[ltu.edu/career\\_services](http://ltu.edu/career_services)

Average starting salary \$61,600  
Mid-career \$116,500  
—PayScale



LTU is at the center of the

**nation's #1 region**

for engineering, architecture, and technology.



**Darpan Arora, MArch'18**, is a building information modeling manager at Alexander Bogaerts & Associates, a firm specializing in residential architecture. Darpan oversees 3D modeling of architectural projects along with the design work he does as a team member. "LTU provided me with multiple research opportunities that helped me build strong industry connections to kick-start my career. The ability to choose between design and research, in-person and online classes, as well as easy communication with the faculty is what made Lawrence Tech special for me."



A few of the places

**LTU**  
grads are  
making a difference

Acument Global  
Technologies  
Airbus Americas  
Albert Kahn Associates  
American Axle &  
Ascension Manufacturing  
AT&T  
Atwell, Inc.  
Barton Malow

Beaumont Health System  
Blue Cross, Blue Shield  
Comau, Inc.  
DENSO International  
North America  
DTE Energy  
Faurecia  
Firstronic LLC

Ford Motor Company  
General Dynamics  
General Motors  
Gensler  
Harman International  
IBM  
ImageSoft  
Johnson Controls  
Lear

MAHLE  
Mannik Smith Group  
Microsoft  
NASA  
Panasonic Corporation  
Peugeot  
Quicken Loans  
ROSSETTI  
Schweitzer Engineering  
Laboratories

Smith Group  
Sports Illustrated  
Stellantis  
TARDEC  
TMP Architecture  
VectorForm  
Walbridge  
Walt Disney World  
WXYZ-TV  
ZF TRW Automotive

Companies recruit on  
campus in a typical year

**250+**



**15,000+** Jobs posted annually

★★★★ **95%**

Students employed or registered for grad school –  
greater than the national average

**Luke Sabo, BSMS'21,** is an actuarial analyst at AmeriTrust Group working toward becoming a fully certified actuary. "There are 10 very difficult exams and I am currently studying for my third one. I have been able to pass these exams due to LTU's rigorous math program properly preparing me. The faculty at LTU gave up their free time outside of class to help me prepare for the first two exams while I was still in school."



**Brittany Wieland, BSBME'21,** is a body armor engineer for the Department of Defense who says her experience in LTU's Biomedical Engineering program proves useful to her every day. "The department really immerses its students in project-oriented learning and research opportunities that force us to be well practiced in the engineering design process. The hands-on curriculum, combined with the staff's support, truly provides you with all the keys to success for the future."



**Zachary Farrer, BSBA'19,** is a Senior Financial Analyst at McQueen Financial Advisors where he provides merger and acquisition (M&A) advisory services to middle-market financial institutions. He enjoys assisting in transactions that have a positive effect on the community and feels that LTU helped prepare him for his career because he was able to interact with his LTU professors who had real industry experience.

Apply [ltu.edu/apply](http://ltu.edu/apply)

### FRESHMAN STUDENTS

In addition to submitting your application, please provide:

- \$50 application fee
- Official high school transcripts
- ACT/SAT scores (Optional)
- Essay (Optional)

### TRANSFER STUDENTS

In addition to submitting your application, please provide:

- \$50 application fee
- Official high school transcripts
- Official university/community college transcripts
- Portfolio (required to transfer credits for design courses in any art/design major)

### SPECS@LTU

- \$50 application fee
- High school transcripts

### INCOMING STUDENT AVERAGES

<b>GPA</b> 3.44	<b>SAT (ERW+M)</b> 1132.4	<b>ACT</b> 24.7
--------------------	------------------------------	--------------------

### YOUR INVESTMENT

At LTU, your tuition supports a personal education: lots of individual attention, small classes, industry-leading faculty, great facilities, the all-encompassing computer program. And the investment pays off: the earning power of a Lawrence Tech bachelor's degree ranks in the top 11% of all U.S. universities (PayScale).

The following estimated costs represent full-time enrollment, based on 30 credits per year. There is no difference between in- and out-of-state tuition.

Specs@LTU	\$6,900**
College of Architecture and Design	\$41,100
College of Arts and Sciences College of Business and Information Technology College of Health Sciences	\$41,700
College of Engineering	\$42,600
Housing	\$7,340
Meal Plan	\$4,330
<b>Total Cost Range</b>	<b>\$52,770 - \$54,270</b>

*Figures do not include books, supplies, or personal expenses.*

*\*See scholarship opportunities*

*\*\* includes \$10,000 scholarship*

### FINANCIAL AID

Incoming LTU undergrad students receive more than \$45 million annually in financial aid. Federal, state, and institutional grants, loans, academic scholarships, need-based funding, and work-study can make your education more affordable. [ltu.edu/financial\\_aid](http://ltu.edu/financial_aid)

### HOW TO APPLY FOR FINANCIAL AID AND SCHOLARSHIPS

Fill out the Free Application for Federal Student Aid (FAFSA) at [studentaid.gov](http://studentaid.gov) (Lawrence Tech school code: 002279). Freshman students admitted by March 1 and transfer students admitted by May 1 are **automatically considered** for competitive, merit-based scholarships. No additional application is necessary. Funding is limited. LTU students may be eligible for up to two scholarships.

### ATHLETIC SCHOLARSHIPS

Athletes can visit [LTUathletics.com](http://LTUathletics.com), click on your sport of choice. Click on Recruiting and fill out the recruiting questionnaire. A coach will contact you. Band, dance team, and esports scholarships are also available.

### FIVE IMAGES CoAD SCHOLARSHIPS

Scholarships are available to students pursuing majors in the College of Architecture and Design and who meet the requirements for an LTU academic scholarship. Submit five images of your work by February 1 for the fall semester.

[ltu.edu/financial-aid/scholarships](http://ltu.edu/financial-aid/scholarships)

### ROBOTICS SCHOLARSHIPS

Robotics scholarships are awarded for student participation in First Robotics, VEX, OCCRA, or Robofest. Students receive \$3,000 annually for a total of \$12,000 over 4 years.

[ltu.edu/financial-aid/scholarships](http://ltu.edu/financial-aid/scholarships)

### SCHOLARSHIP COMPETITION

Accepted freshman students have the opportunity to earn up to \$4,000 more in scholarship money for each of four years at LTU (not to exceed tuition).

[ltu.edu/financial-aid/scholarships](http://ltu.edu/financial-aid/scholarships)



# SCHOLARSHIP OPPORTUNITIES

Test optional for Fall 2024. Test scores are **not** required to receive scholarships; students who are unable to submit standardized scores will not be disadvantaged in the merit scholarship process. If you have already taken or plan on taking the SAT or ACT and would like to submit test scores, your test scores will be considered supplemental information.

Lawrence Tech offers a variety of other scholarships and new students are eligible to receive up to two scholarships.

Scholarships range from \$4,500 to \$16,000.

Additional Scholarships include:

Buell Honor Scholarship

DECA Scholarship\*

Donley Scholarship

National Blue Devil Scholarship

Raise.me Scholarship\*\*

Specs@LTU

STEM Scholarship Award

Many more scholarships available at  
[ltu.edu/financial-aid/scholarships](http://ltu.edu/financial-aid/scholarships)

\* application required  
\*\* external profile required

All admitted students for the Fall 2024 semester will be reviewed for a merit scholarship upon acceptance to LTU.



# Academic Programs

A Associate B Bachelor's P Pre-Professional M Master's D Doctoral *Italic Concentration* C Certificate \* Also Online

## ARCHITECTURE + DESIGN

- B Architecture
- B Civil Engineering + Architecture
- B Game Design
- B Graphic Design
- B Interior Design
- B Product Design
- B + M Architecture  
*(combined bachelor's and master's)*
- M Architecture\*

## ARTS AND SCIENCES

- A General Studies
- A Media Arts and Production
- B Biology
- B Chemistry  
*Biochemistry & Chemical Biology*  
*Engineering Chemistry*  
*Environmental Chemistry*
- B Computer Science  
*Artificial Intelligence*  
*Business Software Development*  
*Cybersecurity*  
*Game Software Development*  
*Scientific Software Development*  
*Software Engineering*
- B Data Science
- B Mathematical Sciences  
*Actuarial Science*  
*Applied Science*
- B Media Communication
- B Physics  
*Computer Science*

- B Psychology  
*Clinical*  
*General and Applied*  
*Industrial/Organizational*  
*Pre-Medical/Biobehavioral*
- B Technological Humanities
- B + M Computer Science  
*(combined bachelor's and master's)*
- M Computer Science

## BUSINESS + INFORMATION TECHNOLOGY

- B Business Administration  
Majors:  
Accounting  
Finance  
General Business  
Information Technology  
Marketing
- B Business Data Analytics
- B Information Technology
- M Business Administration\*
- M Business Data Analytics
- M Healthcare Administration\*
- M Information Technology\*

## ENGINEERING

- B Audio Engineering Technology
- B Biomedical Engineering
- B Civil Engineering
- B Computer Engineering
- B Concrete Technology & Management
- B Construction Engineering Technology and Management

- B Electrical Engineering  
*Computer Engineering*  
*Electronics Engineering*  
*Power Engineering*
- B Embedded Software Engineering
- B Industrial Engineering
- B Mechanical and Manufacturing Engineering Technology
- B Mechanical Engineering  
*Aeronautical*  
*Alternative Energy*  
*Automotive*  
*Manufacturing*  
*Nanoscience and Nanotechnology*  
*Solid Mechanics*  
*Thermal Fluids*
- B Robotics Engineering

- B + M Architectural Engineering  
*(combined bachelor's and master's)*
- M Artificial Intelligence
- M Automotive Engineering
- M Biomedical Engineering
- M Cardiovascular Perfusion
- M Civil Engineering\*
- M Construction Engineering Management\*
- M Electrical and Computer Engineering
- M Engineering Management\*
- M Engineering Quality
- M Industrial Engineering\*
- M Industrial Engineering and Engineering Management

- M Mechanical Engineering
- M Mechatronic and Robotics Engineering
- D Civil Engineering
- D Mechanical Engineering

## HEALTH SCIENCES

- B Biomedical Engineering
- B Healthcare Administration
- B Nursing
- M Cardiovascular Perfusion
- M Healthcare Administration
- M Occupational Therapy
- M Physician Assistant

## PRE-PROFESSIONAL

- P Pre-Dental
- P Pre-Law
- P Pre-Medical
- P Post-Baccalaureate Certificate in Premedical Studies

## SPECS@LTU CERTIFICATES

- C Broadcast Media Arts
- C Digital Media Arts
- C Graphic Communication

For a full list of master's and doctoral programs, visit [ltu.edu/academicsandmajors](http://ltu.edu/academicsandmajors)

## ACCREDITATION

LTU is fully accredited by the **Higher Learning Commission** (312.263.0456, [www.hlcommission.org](http://www.hlcommission.org)). Full report can be viewed in the LTU Library.

### ADDITIONAL ACCREDITATIONS

Architecture: **NAAB**  
 Business and IT: **AACSB, ACBSP, IACBE**  
 Chemistry: **American Chemical Society**  
 Engineering: Bachelor of Science in Biomedical Engineering, Bachelor of Science in Computer Engineering, Bachelor of Science in Civil Engineering, Bachelor of Science in Electrical Engineering, Bachelor of Science in Mechanical Engineering, Bachelor of Science in Robotics Engineering, and Master of Science in Architectural Engineering accredited by the Engineering Accreditation Commission of **ABET**, [www.abet.org](http://www.abet.org).

Bachelor of Science in Mechanical & Manufacturing Engineering Technology accredited by the Engineering Technology Accreditation Commission of **ABET**, [www.abet.org](http://www.abet.org).

Game, graphic, industrial, interior, and transportation design: **NASAD**  
 Interior architecture and design: **CIDA**  
 Nursing: **CCNE**



# Vibrant Metropolitan Area

At Lawrence Tech, you'll be a part of a region pulsing with fun opportunities:

*big-city Detroit attractions*

*exciting suburbs*

*internationally recognized music scene*

*professional sports teams*

*beautiful parks and lakes*

*award-winning zoo*

*outstanding museums*

*modern and historic theaters*

*and Canada is right next door*



## City of Design

Detroit is the first U.S. city to be named  
a City of Design by the United Nations  
Educational, Scientific and Cultural  
Organization (UNESCO)



BEST COLLEGES IN THE MIDWEST

2022 PRINCETON REVIEW\*

AMERICA'S BEST VALUE SCHOOLS

2022 U.S. NEWS & WORLD REPORT\*

One of the oldest and largest architecture schools in the U.S.

BEST IN THE MIDWEST

2022 U.S. NEWS & WORLD REPORT\*

HIGHEST ALUMNI SALARIES

2021 PAYSACLE

TOP 10% OF U.S. UNIVERSITIES

2021 FORBES

NON-DISCRIMINATORY POLICY  
Lawrence Technological University adheres and conforms to all federal, state, and local civil rights regulations, statutes, and ordinances. No person, student, faculty, or staff member will knowingly be discriminated against relative to the above statutes. Lawrence Tech is an Equal Opportunity Employer. Direct inquiries regarding non-discriminatory policies to the Division of Student Affairs, 248.204.4100.

# Lawrence Technological University

Be curious. Make magic.

### Visit

Take a campus tour, meet with a professor and advisor, or attend a special event. Parents are welcome.

[upcoming.ltu.edu](http://upcoming.ltu.edu)

Attend a summer camp. [ltu.edu/summer-camps](http://ltu.edu/summer-camps)

### Contact

Lawrence Technological University Office of Admissions

21000 West Ten Mile Road, Southfield, MI 48075-1058

800.225.5588 Phone [admissions@ltu.edu](mailto:admissions@ltu.edu)

248.204.3160 Phone [ltu.edu](http://ltu.edu)

248.204.2228 Fax

248.450.0116 Text Us!

### Follow



[lawrencetech](https://www.facebook.com/lawrencetech)



[lawrencetech](https://www.youtube.com/lawrencetech)



[@LTUadmissions](https://twitter.com/LTUadmissions)



[lawrencetechu](https://www.instagram.com/lawrencetechu)